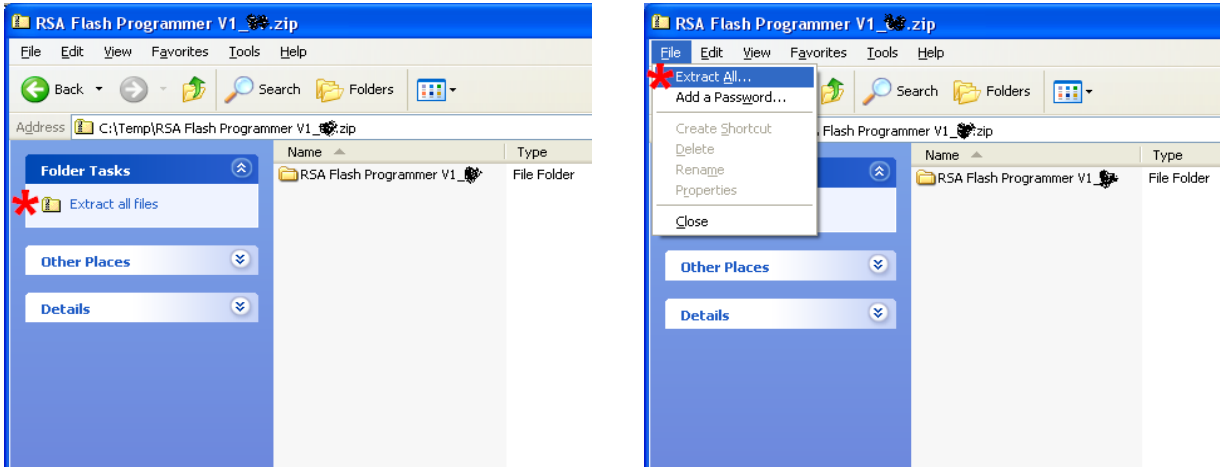
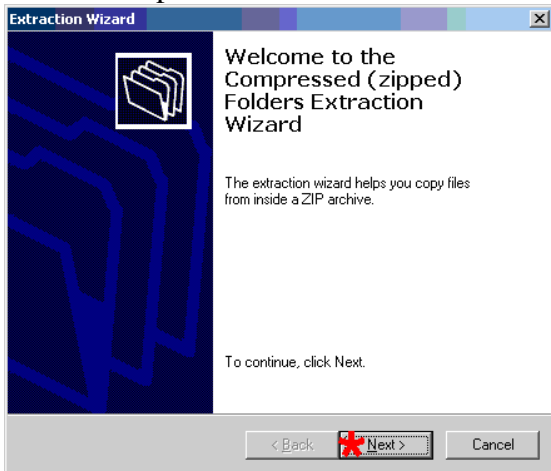


Saving Installation Files

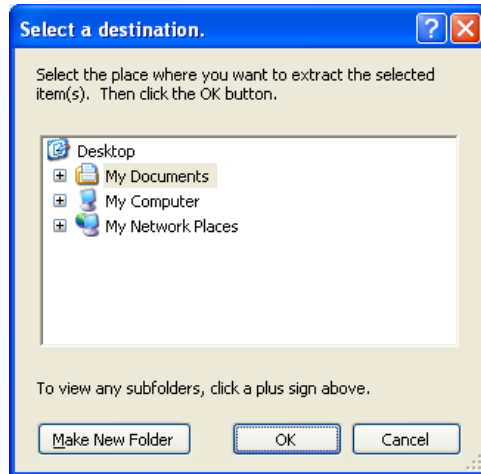
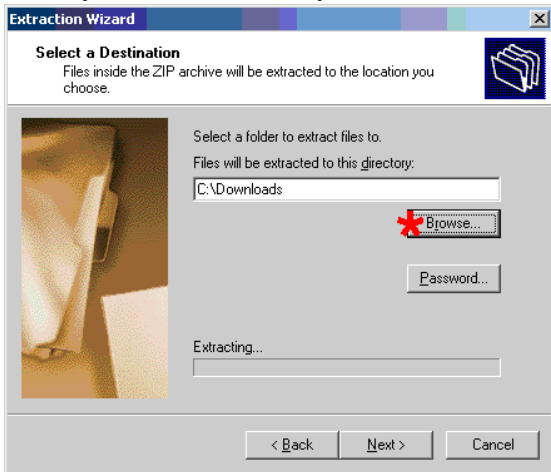
1. Open the “RSA Flash Programmer V1_11.zip” zip folder using the Microsoft Compressed (zipped) Folder viewer.
2. “Extract all files” to a location of your choosing. Note this location for later use. Click on “Extract all files” under Folder Tasks or select File-Extract All... from the menu.



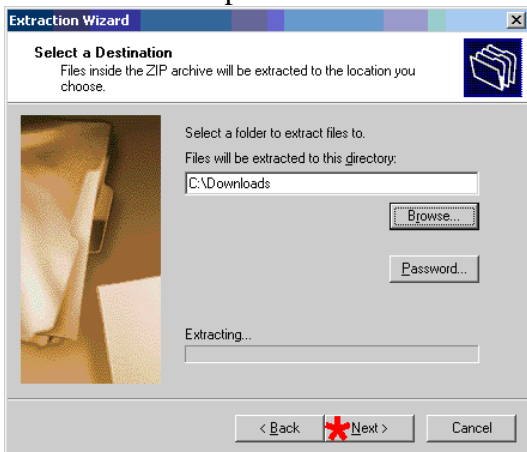
3. The compressed folder extraction wizard will appear. Click Next.



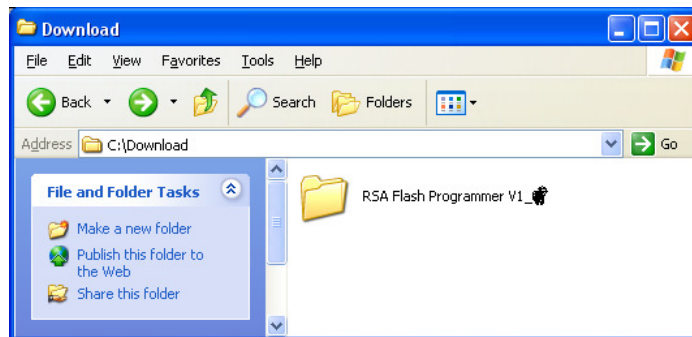
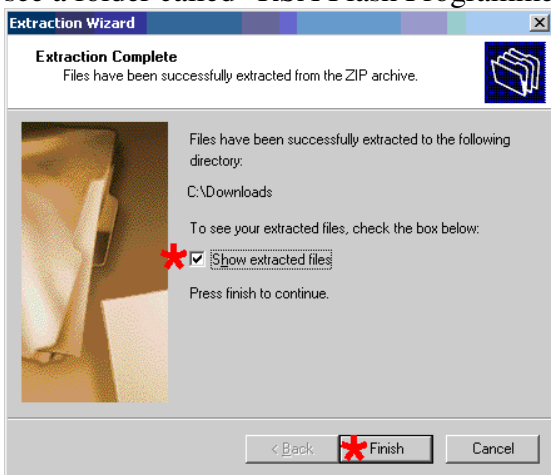
4. When asked to select a destination, use the Browse... button to select a location of your choice where the installation files will be stored. Make note of this location for use later in the installation process. Click OK when you have selected your location.



5. Click Next to proceed with the file extraction.



6. When the extraction is complete, check the box next to “Show extracted files” and click Finish. You should see a folder called “RSA Flash Programmer V1_11” stored in the location you selected.



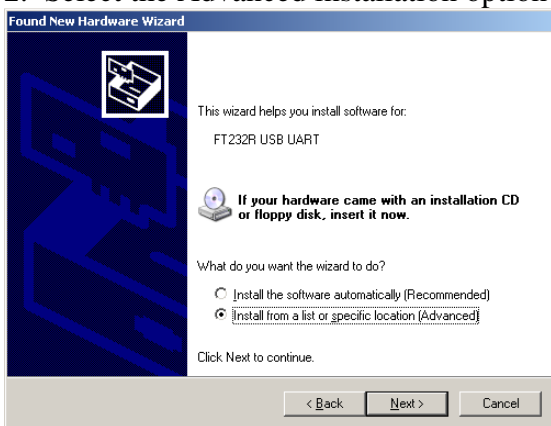
Installing the USB drivers for communication with the System Analyzer

NOTE: If the System Analyzer USB drivers are already installed and working on your computer, skip this section and move on to “Installing the RSA Flash Programmer Software” on page 6.

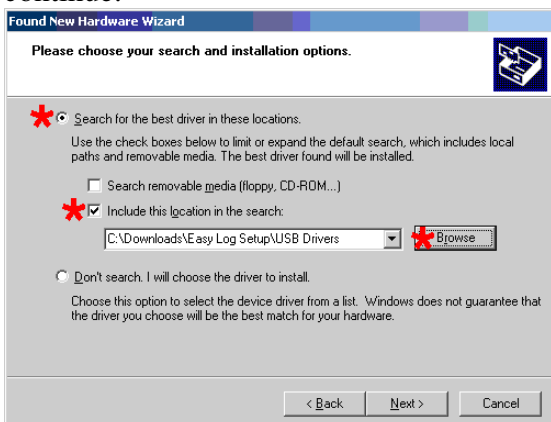
1. Connect the System Analyzer to your computer using the USB cable supplied with the instrument and turn the instrument on. Your computer should detect that new hardware has been connected. A “Found New Hardware” balloon will appear followed by the “Found New Hardware Wizard”. Select the “No, not this time” software search option and click Next.



2. Select the Advanced installation option and click Next.



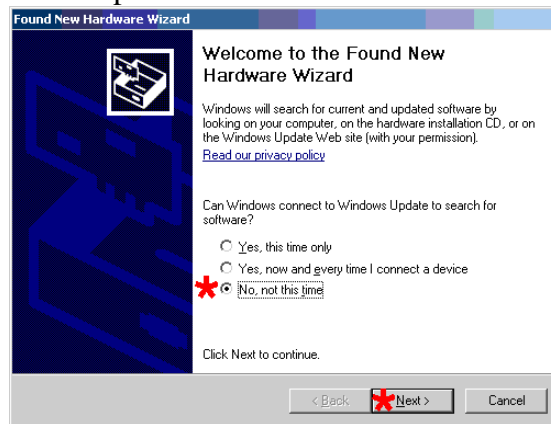
3. Guide the installation wizard to the location of the USB drivers by selecting the search options shown below and clicking the Browse button. Browse to the “USB Drivers” folder that was stored on your computer during the “Saving Installation Files” procedure (See Step 6). Click OK to close the Browsing window and Next to continue.



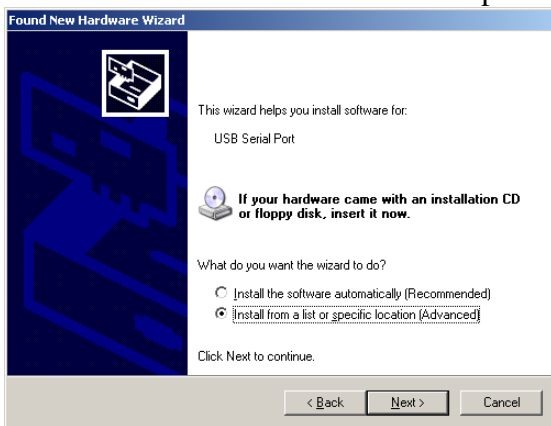
4. The wizard will find the USB driver and install it. Click Finish when complete.



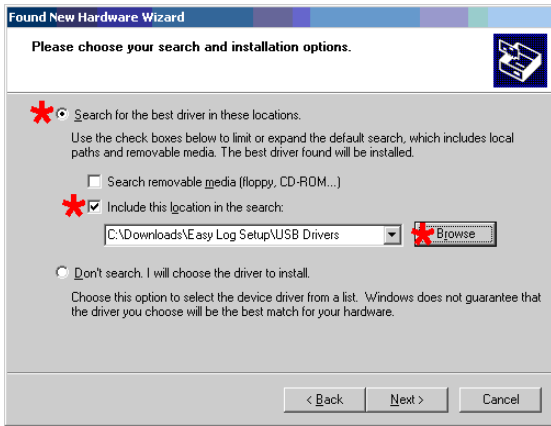
5. A second “Found New Hardware” balloon will appear followed by the “Found New Hardware Wizard”. Again, select the “No, not this time” software search option and click Next.



6. Select the Advanced installation option and click Next.



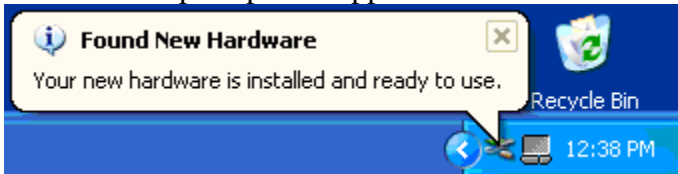
7. Guide the installation wizard to the same USB Drivers folder as in Step 3 and click Next.



8. The wizard will find the USB driver and install it. Click Finish when complete.

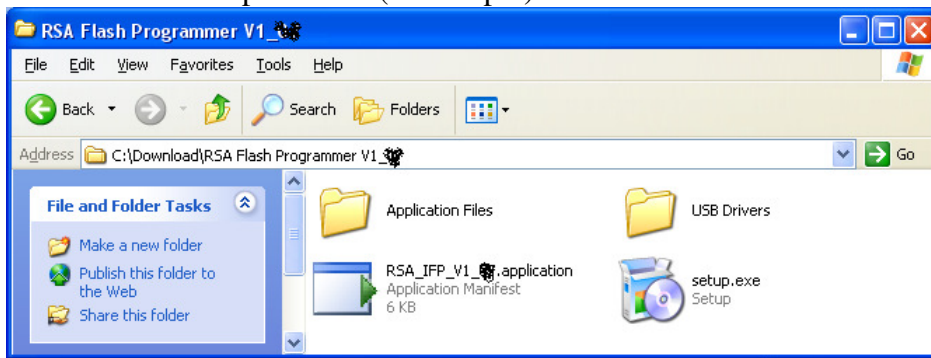


9. A balloon prompt will appear when the drivers are completely installed.



Installing the RSA Flash Programmer Software

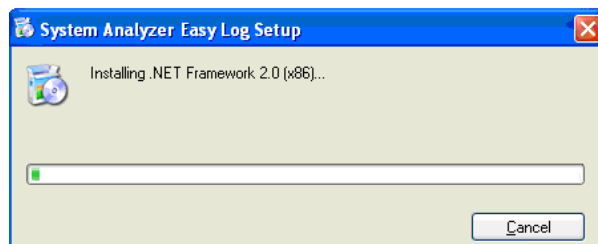
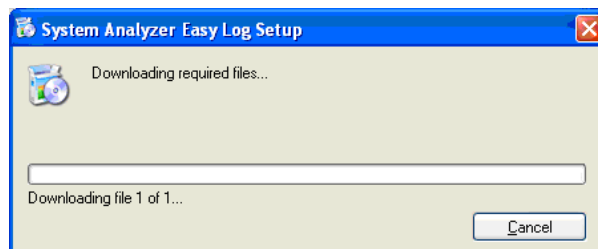
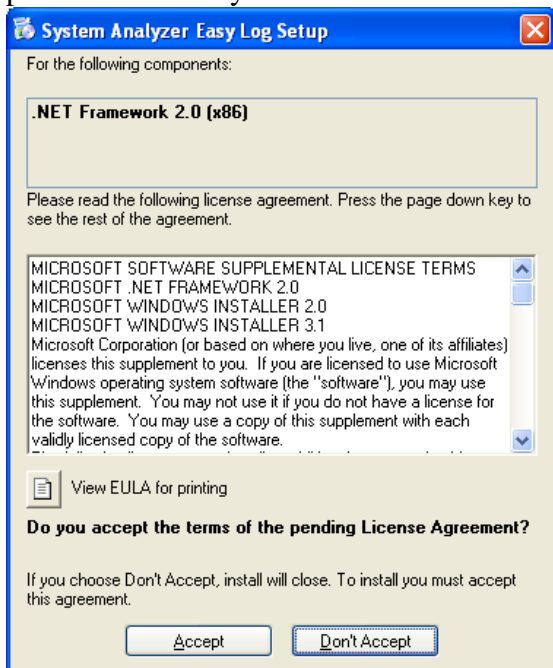
1. Browse to the “RSA Flash Programmer V1_11” folder that was stored on your computer during the “Saving Installation Files” procedure (See Step 6).



2. Double-click “setup.exe” and click Run.



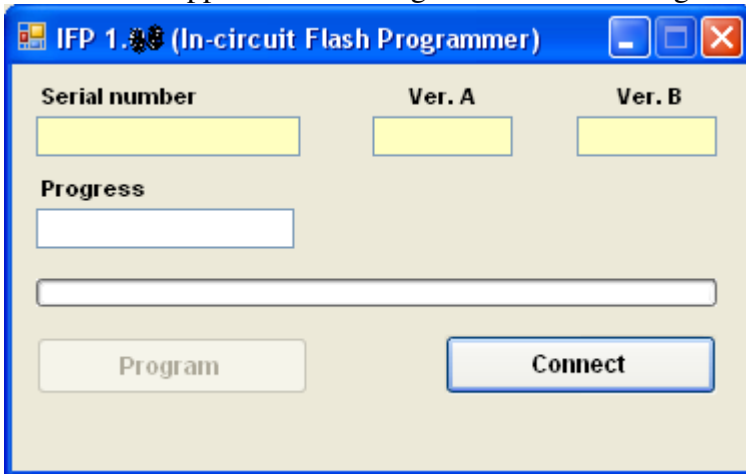
3. The installation program may download and install .NET Framework 2.0 (if not already present on your computer). You will need to Accept the Microsoft license agreement and wait for the download and installation process. This may take several minutes.



4. After verifying that the .NET Framework 2.0 software is installed, the Refrigerant data writer software will be installed. Click Install to grant permission for the installation.



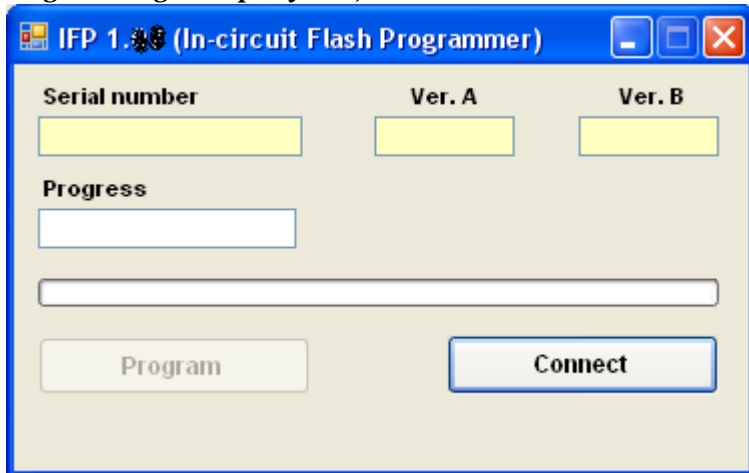
5. When installation is complete, the RSA Flash Programmer V1_11 application will launch, and the following window will appear. See “Using the RSA Flash Programmer software” for more instructions.



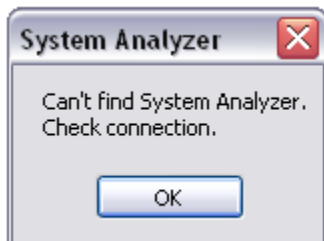
Using the RSA Flash Programmer software

Before beginning the update, Please check the battery level indicator on the refrigerant system analyzer. Change the battery if the battery indicator is showing **RED**.

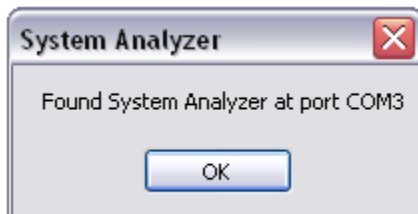
1. Connect the Refrigerant system analyzer to the PC using the USB cable.
2. Turn on the Refrigerant system analyzer. If this is the first time connecting to the PC, You will need to install the USB drivers on your PC. (*See Installing the USB drivers*)
3. To run the RSA Flash Programmer software, click **START**, select **All Programs**, click to select **Ritchie Engineering Company Inc**, and click on **In-circuit Flash Programmer V1_11**.



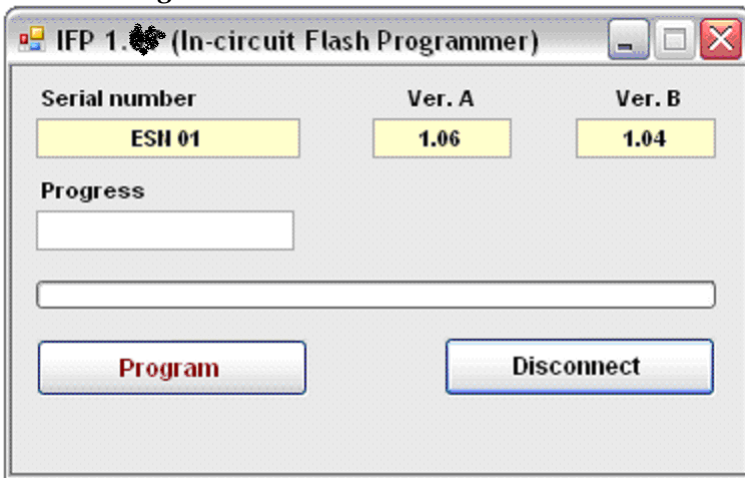
4. Click **Connect**. If the PC does not find an analyzer connection, the following display will appear. Click **OK** and **Connect** again or close the RSA Flash Programmer software and try again.



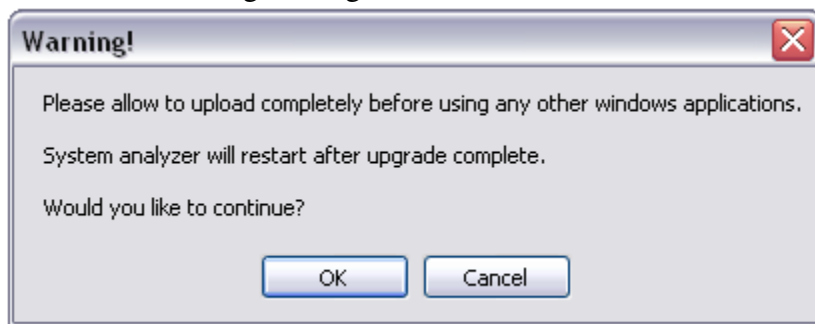
5. If successfully connected with a refrigerant system analyzer, your PC will display "**Found System analyzer at port COM xx**" and a pop-up screen will display on the system analyzer. Click **OK**.



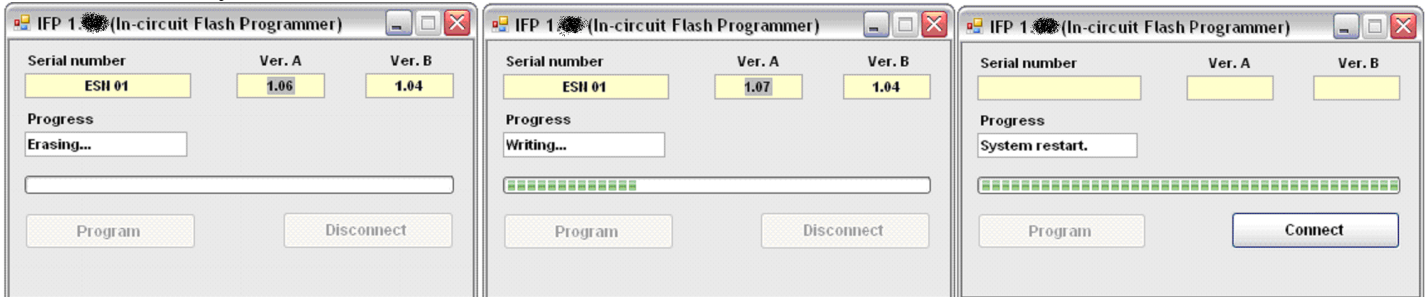
6. Click **Program**



7. Read the warning message and click **OK**



8. Now the In-circuit Flash Programmer software will transfer the new firmware to your System analyzer. Please do not press any buttons on the System Analyzer while transferring. When finished, the system analyzer will automatically disconnect and restart.



9. Close the In-circuit Flash Programmer software.