

YELLOW JACKET®

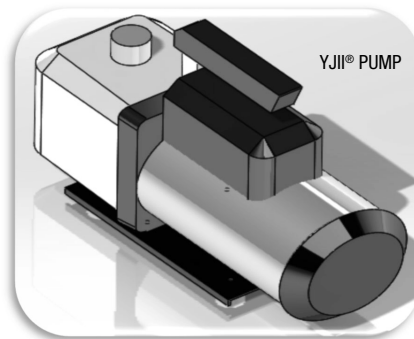
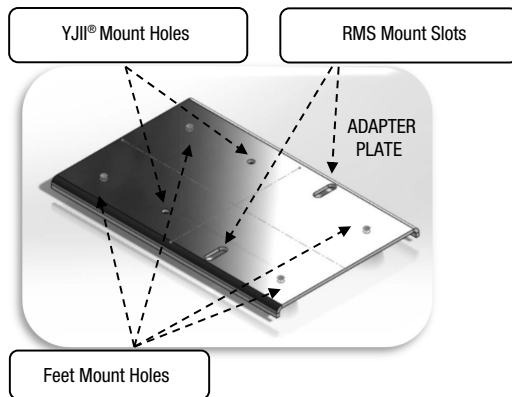
RMS YJII® Adapter Plate Kit PN 38163 User Guide for RMS 3783X and 3788X

Required Parts

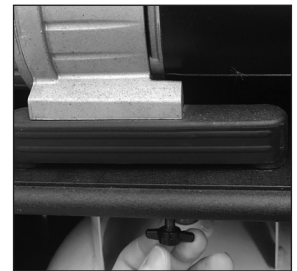
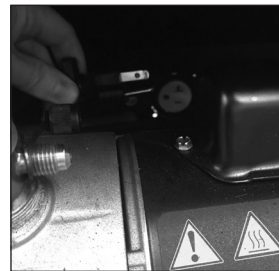
Qty	Part #	Description
(1)	38163	Vacuum Pump Adapter Kit (Includes plate, hose, and mounting hardware)
(1)	93266	YJII® Vacuum Pump
(1)	3783X/3788X	RMS Machine

Required Tools

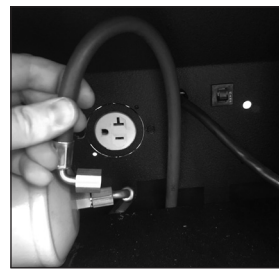
- Phillips #2 Screwdriver
- Utility Knife
- 9/16" Wrench
- Side Cutters or Scissors
- 4 mm Hex Key
- 7 mm Socket & Ratchet/Screwdriver



1. Make sure the RMS machine is unplugged and that the power switch is in the "OFF" position. Disconnect the vacuum pump hose from the pump intake fitting using a 9/16" wrench. Reach behind the vacuum pump and unplug it from the receptacle. Remove the (2) vacuum pump mounting screws from below the vacuum pump shelf. Carefully lift the pump off the shelf and set aside.



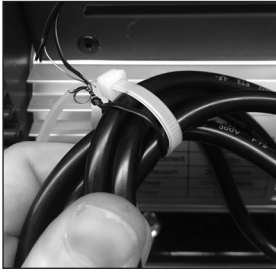
2. Using a 9/16" wrench, disconnect the vacuum pump hose from the flare connection below the vacuum pump shelf on the back of the machine. The tank can be removed from the machine to provide more clearance if needed. Route the new vacuum pump hose through the opening behind the vacuum pump shelf and connect one end of the hose to the flare connection below the shelf.



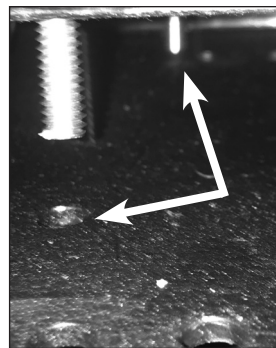
3. Open the 93266 YJII® Vacuum Pump box using a utility knife and remove the pump from the packaging. Place the pump on its side and remove the (2) plate mounting screws using a 4 mm hex key. Once the plate has been removed from the pump, remove the (4) rubber feet using a #2 Phillips screwdriver and 7 mm socket. Transfer the (4) rubber feet and corresponding hardware to the adapter plate. Attach the adapter plate to the bottom of the pump using a 4 mm hex key to tighten the (2) screws.



4. Place the pump upright. Tighten the provided zip tie around the bundled portion of the vacuum pump power cord and remove the twist tie. Once the zip tie has been tightened, the tail can be cut off with a side cutters or scissors if desired. Remove the red plastic cap from the pump exhaust and remove the exhaust fitting. Fill the vacuum pump with the provided vacuum pump oil and reattach the exhaust fitting (discard the red cap). With the vacuum pump filled with oil, place one 1/4"-20 x 1" pump mounting bolt down through the top of each slot in the adapter plate (2 total).



5. **With the exhaust fitting and pump oil reservoir to your right side,** carefully lift the pump onto the pump shelf and align the mounting bolts with the (2) holes in the shelf that are furthest to the left side as shown. Thread the (2) supplied 1/4"x-20 wing nuts, onto the pump mounting bolts below the shelf. Place your finger on the head of each bolt as you tighten to prevent the bolt from rotating. The serrations on the bolt head flange help to prevent the bolt from turning as the wing nut is tightened.



6. Push the bundled power cord behind the pump and plug it into the receptacle above the shelf. Make sure the pump power switch is in the "ON" position. Remove the cap from the 1/4" flare port on the pump intake and tighten the end of the vacuum pump hose onto the fitting using a 9/16" wrench as shown. Make sure the cap on the top 3/8" flare fitting of the pump intake is tight. The pump install is complete.



Ritchie Engineering Company, Inc.
YELLOW JACKET® Products Division
10950 Hampshire Ave South
Bloomington, MN 55438-2623 USA

Email: custserv@yellowjacket.com
Website: www.yellowjacket.com
Phone: (952) 943-1300
(800) 769-8370