

YELLOW JACKET®

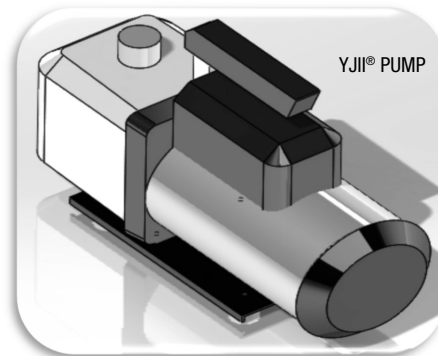
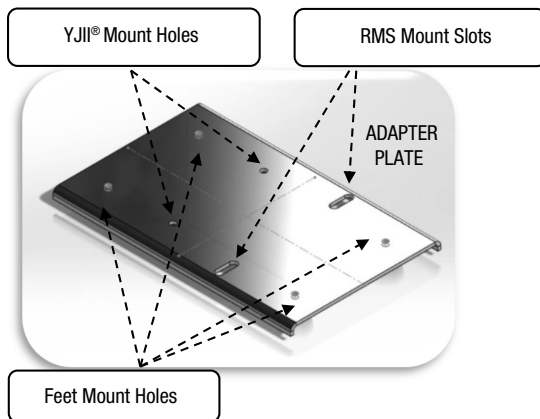
RMS YJII® Adapter Plate Kit PN 38164 User Guide for RMS 3784X and 3786X

Required Parts

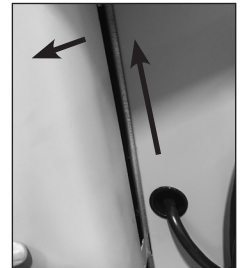
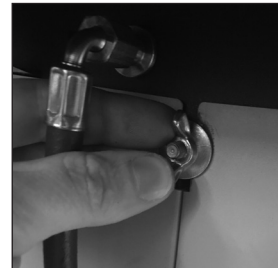
Qty	Part #	Description
(1)	38164	Vacuum Pump Adapter Kit (Includes plate, grommets and mounting hardware)
(1)	93266	YJII® Vacuum Pump
(1)	3784X/3786X	RMS Machine

Required Tools

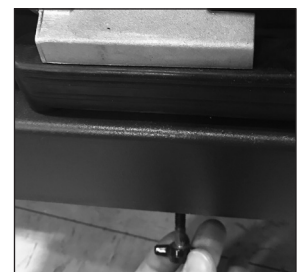
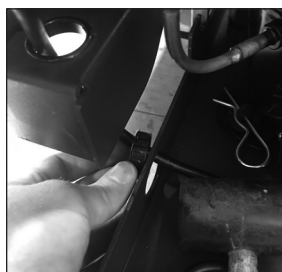
- Phillips #2 Screwdriver
- 9/16" Wrench
- 4 mm Hex Key
- 5/32" Hex Key
- Utility Knife
- Side Cutters or Scissors
- 7 mm Socket & Ratchet/Screwdriver
- Rubber Mallet



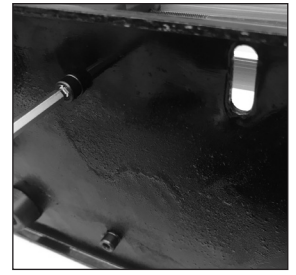
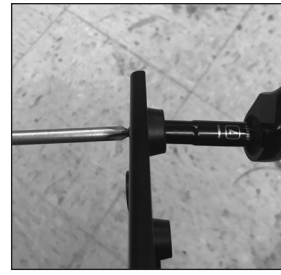
1. Make sure the RMS machine is unplugged and that the power switch is in the "OFF" position. To disconnect the vacuum pump from the machine, the left shroud must be removed so the power cord can be fed back to the pump for removal. To remove the left shroud, remove the silver button head cap screw with a 5/32" hex key and the (2) wing nuts at the top and bottom of the shroud edge along the front of the machine. With the screw and wing nuts removed, lift on the shroud, and pull the edges of the shroud out away from the machine. Set the shroud aside.



2. There are (3) plastic grommets that must be removed. Tap on the backside of the grommets with a rubber mallet to knock them out of the holes. Cut the zip tie around the bundled portion of the vacuum pump power cord. Now the vacuum pump can be unplugged from the receptacle on the back of the machine. The power cord can be removed from the wire management clips and fed back through the (3) holes. The tank can be removed from the machine to provide more clearance if needed. Disconnect the vacuum pump hose from the pump intake fitting using a 9/16" wrench. Remove the (2) vacuum pump mounting screws from below the vacuum pump shelf. Carefully lift the pump off the shelf and set aside.



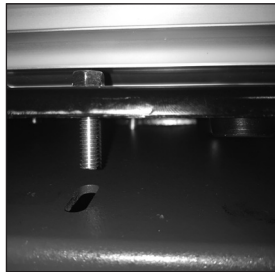
3. Open the 93266 YJII® Vacuum pump box using a utility knife and remove the pump from the packaging. Place the pump on its side and remove the (2) plate mounting screws using a 4 mm hex key. Once the plate has been removed from the pump, remove the (4) rubber feet using a #2 Phillips screwdriver and 7 mm socket. Transfer the (4) rubber feet and corresponding hardware to the adapter plate. Attach the adapter plate to the bottom of the pump using a 4 mm hex key to tighten the (2) screws.



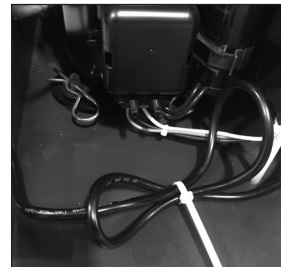
4. Place the pump upright. Remove the red plastic cap from the pump exhaust and remove the exhaust fitting. Fill the vacuum pump with the provided vacuum pump oil and reattach the exhaust fitting (discard the red cap). With the vacuum pump filled with oil, place one 1/4"-20 x 1" pump mounting bolt down through the top of each slot in the adapter plate (2 total).



5. **With the exhaust fitting and pump oil reservoir to your left side,** carefully lift the pump onto the pump shelf and align the mounting bolts with the (2) slots in the shelf as shown. Thread the (2) supplied 1/4"-20 wing nuts, onto the pump mounting bolts below the shelf. Place your finger on the head of each bolt as you tighten to prevent the bolt from rotating. The serrations on the bolt head flange help to prevent the bolt from turning as the wing nut is tightened.



6. Remove the twist tie from the bundled power cord and route the plug through the (3) holes, following the same path as the power cord from the pump that was removed from the machine. Bundle the excess power cord near the machine compressor and tighten the provided zip tie around the bundle. Once the zip tie has been tightened, the tail can be cut off with a side cutters or scissors if desired. Place the (3) plastic hole grommets into the 3 holes that the power cord passes through. Place the power cord back into the cord management clips and plug the pump into the receptacle on the back of the machine labeled "Vacuum Pump Outlet".



7. Make sure the pump power switch is in the "ON" position. Remove the cap from the 1/4" flare port on the pump intake and tighten the end of the vacuum pump hose onto the fitting using a 9/16" wrench. Make sure the cap on the top 3/8" flare fitting of the pump intake is tight. Replace the left shroud and tighten the corresponding wing nuts and button head cap screw. The pump install is complete.



Ritchie Engineering Company, Inc.
 YELLOW JACKET® Products Division
 10950 Hampshire Ave South
 Bloomington, MN 55438-2623 USA

Email: custserv@yellowjacket.com
 Website: www.yellowjacket.com
 Phone: (952) 943-1300
 (800) 769-8370