



# YELLOW JACKET®

## Heat Pump Manifold

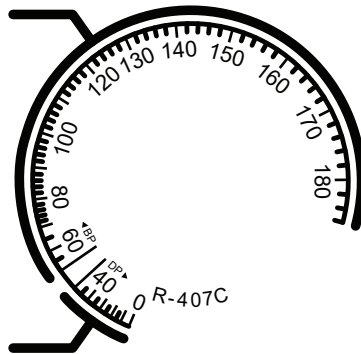
### ADDITIONAL INFORMATION

Whether the heat pump is in heating mode, cooling mode, or in transition, the YELLOW JACKET® Heat Pump Manifold features two 800 psi gauges with 1% full scale accuracy to handle all heat pump pressure conditions. Traditional low side manifold gauges can be susceptible to damage when heat pumps go into heating mode.

The Heat Pump Manifold gauges feature the three most common refrigerants used in heat pumps: R-22, R-410A, and R-407C.

**Note on R-407C Pressure-Temperature Scales:** Because R-407C refrigerant has a significant temperature glide, we have divided its pressure-temperature scale into two sections. For temperatures below 50° F, the scale is based on saturated vapor (dew point - DP). For temperatures above 50° F, the scale is based on saturated liquid (bubble point - BP). Use the “DP” section for superheat calculations, and the “BP” section for subcooling calculations.

**For R-407C subcooling calculations**



**For R-407C superheat calculations**

**LIFETIME GUARANTEE:** Your new YELLOW JACKET® manifold bar is covered by a unique LIFETIME GUARANTEE. The LIFETIME GUARANTEE applies only to the manifold bar shown below. However, in order for us to provide the best resolution, we ask that you include the manifold bar, gauges, valves & handles when returning for service. DO NOT include any hoses with the return.

If for any reason the manifold bar becomes inoperative, please contact YELLOW JACKET® customer service for a warranty service repair order (SRO) authorization number and label that must accompany the manifold upon return. Postage and handling costs vary by items and will be advised by the customer service representative.

Replacement parts and the complete YELLOW JACKET® product line can be purchased from your Ritchie Engineering, YELLOW JACKET® distributor.

Ritchie Engineering Company, Inc.  
YELLOW JACKET® Products Division  
10950 Hampshire Avenue South  
Bloomington, MN 55438-2623  
Phone: (800)769-8370 or (952)943-1333  
E-mail: [custserv@yellowjacket.com](mailto:custserv@yellowjacket.com)  
[www.yellowjacket.com](http://www.yellowjacket.com)