

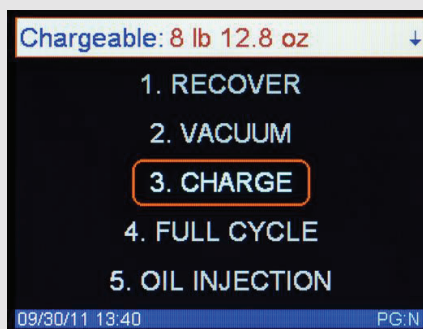
# Refrigerant Management System 3783X/3788X Series Automatic



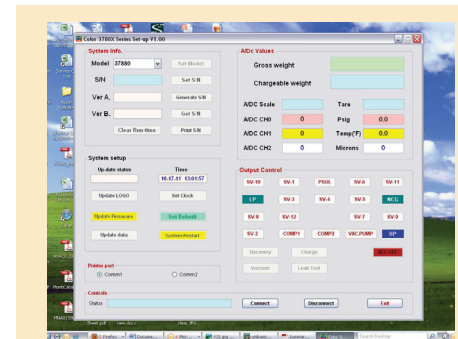
# YELLOW JACKET®



## Full Color Graphic Display



- Advanced user interface and onboard diagnostics
- Automatic scale calibration
- Vacuum hold feature



### Remote Troubleshooting

System giving your trouble and you're looking for a fast fix? Simply connect your system to a PC via USB, and your service technician can troubleshoot remotely or at your location. Our unique software program walks the service center through the troubleshooting process step-by-step, allowing the technician to diagnose and quickly recommend a fix. This software also allows you to change the display logo, update the firmware and change models for upgrades.

With over 10 years experience building automated A/C systems and a 70+ year reputation of building quality HVAC service tools, Ritchie Engineering knows what it takes for service technicians and shop owners to meet today's tough service standards – A/C service centers that are quick and easy to operate while lowering A/C service costs.

That's why we designed the YELLOW JACKET® Refrigerant Management System (RMS) 3788X/3783X Series with SAE J2788 approval. The 3788X/3783X Series provides full cycle recovery/recycle/evacuate/recharge to bring the vehicle back to factory specifications. The simple numeric keypad and full color display walk you quickly through each step for easy operation and fast service.



### 3788X/3783X Features Include:

- Built-in oil injection
- High-side or low-side charging
- Fast tank refills with no hose changes
- Refrigerant management system that keeps track of information on A/C service work
- Built-in self diagnostics
- Maintenance reminders for oil and filter changes
- Automatic scale calibration to +/- 1/4 oz. exceeds industry specifications for accurate charging
- Automatic shut-off for full tank and high pressure
- Heavy duty shock resistant scale for accurate charging
- Two-stage, 5 cfm vacuum pump for fast, high-efficiency evacuation
- Twin 1/2 hp compressors for speed and reliability
- Fully factory tested after a 34-point quality check



**RMS 37887 and 37837 with unique flush feature OEM approved for use with high voltage compressor A/C systems.....**

- Allows simple and quick clearing of the service hoses to minimize PAG oil contamination
- Reduces oil contamination well below allowable amount
- Eliminates the need to worry about cross contamination of oil
- Fully automatic
- 50 lb. storage tank
- Integrated printer (37837 only)



## YELLOW JACKET® RMS 3788X/3783X Series Automatic Delivers the Performance You Need:

- Improved charge program for faster vacuum charge and proper charge every time
- Maintenance reminders
- 10-foot premium YELLOW JACKET® PLUS II™ hoses for easy connection to even hard-to-reach fittings (15 feet for 37882, 37886)
- Approved to SAE J2788 with hybrid addendum
- Automatic scale calibration to 1/4 oz. exceeds industry specs and assures accurate charging every time
- High impact ABS plastics cabinet with rounded corners and edges to help prevent damage to vehicles
- Modular design for easy repair and maintenance



- 3.5" color-coded gauges with follower needles are easy-to-read even from inside the vehicle
- For preventative maintenance, an LCD alerts the technician to change vacuum pump oil and filters
- Technician can choose from high or low side charging for autos with only one service fitting
- Large pneumatic tires for ease of mobility
- Training video at: <https://yellowjacket.com/videos/refrigerant-management-system-model-37880/>
- One-year parts and labor warranty

### FEATURES AT A GLANCE

Fully automatic recover/recycle/evacuate/recharge
Auto oil and air purge
Built-in oil injection (excluding 37887 and 37837)
Optional printer
Improved vacuum/charge program for faster vacuum
Maintenance reminders
Large 3.5" easy-to-read color gauges
Hi and Lo side charging
50 lb. cylinder
Meets SAE J2788 with hybrid addendum

UPC #	Description
37830	Automatic RMS with printer
37837*	Hybrid Compatible RMS with printer
37880	Automatic RMS
37882	Heavy Duty RMS with 15' hoses
37885	Automatic RMS - 230V
37886	Heavy Duty RMS with 15' hoses
37887*	Hybrid Compatible RMS
37889	Automatic RMS with integrated micron gauge

### RMS 3788X Series Specifications

Recovery tank	50 lbs.
W x D x H	19.5" x 29" x 45"
Weight	219 lbs.
Compressors (two)	1/2 hp hermetic
Vacuum pump	2-stage 5 cfm
Hoses	10 foot (15 foot on 37882 and 37886)
Air purge	Automatic
Hour meter	Yes

\*For use with high voltage compressor A/C systems.